

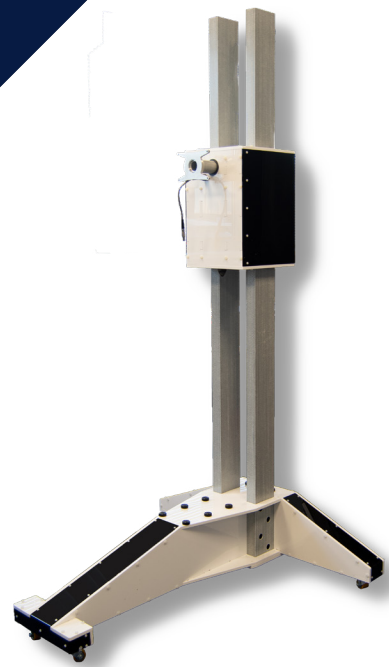


# raditeq

## Product manual

# RadiTower®

## Antenna Tower



Models:  
RTW3000A

[www.raditeq.com](http://www.raditeq.com)

## **RadiAmp® Product Manual**

This service and operating manual pertains to the RadiTower Antenna tower  
Models:

RTW3000A

Made by Raditeq.

It is strongly advised that this manual is carefully read before operating this product and adhere to any safety instructions it might contain.

Please contact Raditeq or your local reseller if you have any questions.

## **Supplier Information**

### **Raditeq B.V.**

Vijzelmolenlaan 3  
3447 GX, Woerden  
The Netherlands

Tel.:	+31 (0)348 200 100
Internet:	<a href="http://www.raditeq.com">www.raditeq.com</a>
Email:	<a href="mailto:sales@raditeq.com">sales@raditeq.com</a>

## Table of contents

WARNINGS & PRECAUTIONS	4
Introduction	5
Related products	5
The RadiTower	6
Assembly	7
Warranty Conditions	12

## WARNINGS & PRECAUTIONS



Read the contents of this product manual carefully and become familiar with the safety markings, the product instructions and the handling of the system. Please refer to the applicable product manual(s) for further information regarding the operation and control of the product(s).



Only Raditeq qualified maintenance personnel is allowed to perform maintenance and/or repair service on the equipment.



This product® contains materials that can be recycled and reused to minimize material waste. At the 'end-of-life', specialized companies can dismantle the discarded system to collect the reusable and recyclable materials. If your product is at its 'end-of-life', please return it to your local reseller or to Raditeq for recycling.

## Introduction

The RadiTower® model RTW3000A Antenna mast can be used for RadiField® E-Field Generator antennas with a stinger mount boom with a diameter of 40 mm. For the RadiField® this boom is available from Raditeq, part number: RFB1040A.

The RadiTower® has an integrated electro-motor for automated horizontal/vertical polarisation of the RadiField®. It is mounted with wheels for easy moving and positioning of the RadiField® which is ideal for immunity testing in an anechoic chamber.

## Related products



### [RadiMation® automated EMC/RF test software](#)

RadiMation® is the EMC software package from Raditeq B.V. RadiMation is used for remote control and automated RF and EMC testing. In Combination with the RadiCentre® the software really shines brightest and enables the user fully automated EMC and RF testing. Plug-in cards and modules and is sold separately.

### [RadiField® Electric field generator](#)



The patented RadiField® Triple A is no less than a revolution in EMC immunity testing. A complete paradigm shift involves a combination of high-level integration and a field combining technique, making several discrete components like combiner, coupler, power meters and cabling superfluous. This product is sold separately.

### [RadiSense® Electric field probe](#)



The RadiSense® Electric field probe is currently the most accurate electric field probe on the market. This probe operated from the RadiCentre® can measure from 9 kHz up to 10 GHz.

## Product Parts

This RadiTower® is shipped in a specific set of pre-constructed parts which need to be assembled at the users test facility. If any parts are missing, please contact Raditeq at [office@raditeq.com](mailto:office@raditeq.com).

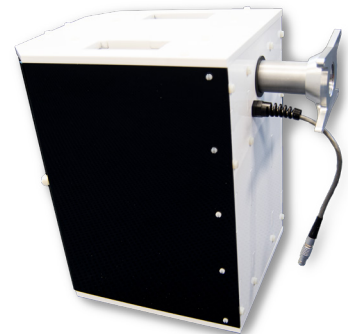
12 x Screw for top and bottom of the RadiTower. (Hand screwed)



8 x Screw to attach the bars to the RadiTower base.  
(socket wrench 13 needed)



1 x Antenna rotator and holder to rotate the RadiField® Horizontal and vertical



2 x Vertical bars to hold the antenna rotator.



1 x RadiTower® base feet, top part .

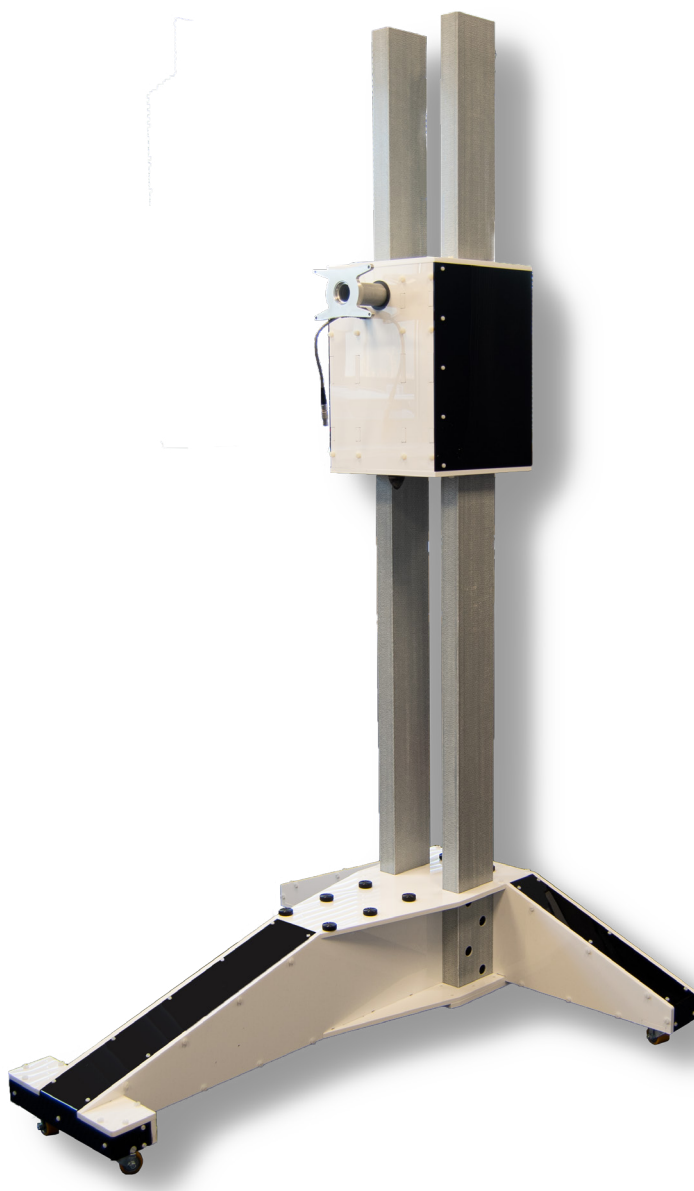


1 x RadiTower® base feet, bottom part.



## RadiTower

The complete assembled RadiTower® model RTW3000A should look as shown in the picture below.



Front

back



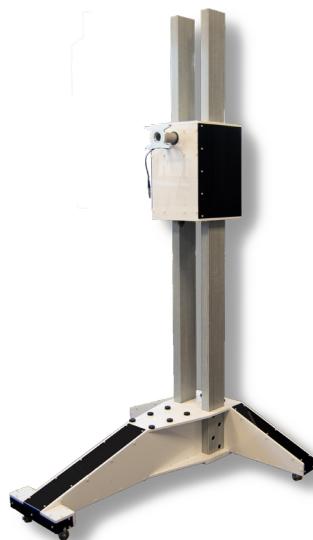
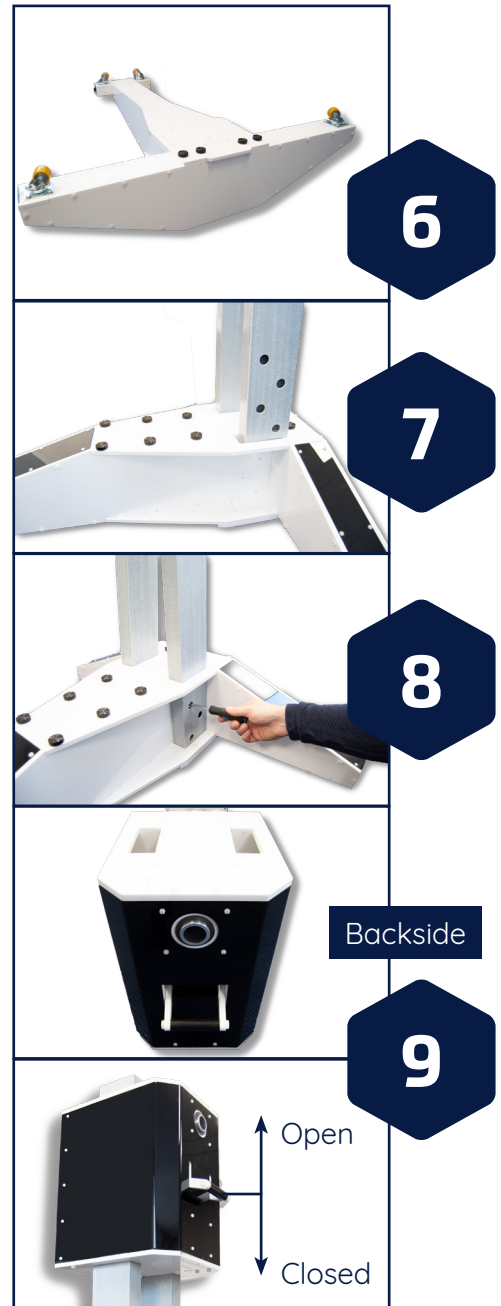
## Assembly of the RadiTower

The RadiTower is assembled in a couple of steps illustrated here with pictures.

- 1. Start by take the two parts of the base feet and slide them into each other using the designated slits
- 2. The back side of the base will stick out upwards due to the weight.
- 3. This will need to be corrected by lifting the back end of the feet upwards sliding it in the correct straight position.
- 4. While holding the back-end upwards, insert and fasten the two (2) screws most to the back to hold the feet in its position. **Note that these screws are made out of plastic which means that, if they are fasten to tight, they can break. We suggest to fasten the screw one 360° turn after resistance is felt.**
- 5. Continue with inserting and fastening the seven (7) remaining top screws into the base



- 6. Turn the base upside down and screw in the remaining two screws in to the back end of the base.
- 7. Turn the base back on the wheels and place the bars in the designated holes. It is important that the bar is placed with the larger holes away from the base. There is a left and a right bar where the holes are mirrored, so they match and fit the screw-sockets.
- 8. Screw the bar to the base using the white screws and a socket wrench (13)
- 9. Place the rotator on top of the bars note that the handle of the rotator should be positioned towards the back of the tower. The rotator can only be lowered when the handle is moved upward. When the rotator is at the correct and desired height, lift the handle down to lock the rotator at the current height.
- 10. You have completed assembling the RadiTower® Model RTW3000A.



10

## Warranty Conditions

Raditeq B.V. offers a standard warranty term of three (3) years on their products, calculated from the shipping date, under the condition that the product is registered on [www.raditeq.com](http://www.raditeq.com). For registration of the product, the customer should provide the product model, serial number and the responsible reseller (if applicable). If the product is not registered, a limited warranty term of one (1) year will be applicable.

## Return Material Authorization (RMA) & Warranty repair

If a defect occurs to our product within the warranty term, a Return Material Authorization (RMA) 'Warranty Repair' request can be issued using the RMA link at [www.raditeq.com/support](http://www.raditeq.com/support). Upon receipt of the request, an RMA number will be provided. Please do not send the product without this RMA number! The defective product should be shipped to our service department at the following address:

Raditeq B.V. – Service Department  
Vijzelmolenlaan 3  
3447GX WOERDEN  
The Netherlands

There will be no charge for repair services (materials or labour) within the (extended) warranty term.  
These warranty terms are not applicable to:

- Normal wear and tear
- Fibre optic cables
- Products that have been improperly used
- Products that have been used outside their specified range
- Products that have been improperly installed and/or maintained
- Products that have been modified without approval of Raditeq
- Calibration and/or re-calibration of the product

Repair services on products that are not covered by the Raditeq warranty will be charged to the customer.

## Repairs outside warranty

If a defect is not covered under warranty, an RMA fixed-repair can be ordered on the RMA link: [www.raditeq.com/support](http://www.raditeq.com/support). If a re-calibration is needed after repair, this calibration should be ordered separately. The calibration will be performed at the ISO17025 accredited calibration laboratories of DARE!! Calibrations, based on the applicable service code / prices.

## Warranty after repair

For repairs outside the original warranty period, a limited warranty of six months is applicable on the performed repair. Shipping conditions are the same as with repairs that are covered within the original warranty period.

## Shipping

The customer will need to arrange shipping and cover for the costs (like e.g. transportation costs, duties, taxes) for sending the defect product the service department of Raditeq in The Netherlands. Raditeq will arrange the courier and cover for the costs for the return shipment after repair.



Raditeq B.V. | Vijzelmolenlaan 3 | 3447GX Woerden | The Netherlands

[www.raditeq.com](http://www.raditeq.com) | T: +31 348 200 100