



raditeq

Data Sheet



RadiField® RI Test Bundle

Compact

Efficient

Full Compliant





RadiField® RI Test Bundle

800 MHz to 6 GHz Radiated Immunity Test System

Turnkey

Efficient

Full Compliant

Raditeq offers the RadiField® RI Test Bundle for radiated immunity testing up to 6 GHz. This bundle offers a great opportunity for EMC test facilities to have a complete turnkey system which has all the advantages of the Raditeq product synergy.

The RadiField® bundle includes:

- **RadiCentre® Pro - CTR1009B#020** - 7 slots multifunctional EMC test system
- **RadiField® - RFS2006B** - RadiField 0.8 - 6 GHz @ 10 V/m field generator
- **RadiTower® - RTW3000A** - Mast with automatic H/V positioner
- **RadiGen® - RGN2006B** - 4 kHz to 6 GHz signal generator
- **RadiSense® - RSS2010S** - 20 MHz to 10 GHz Field probe
- **RadiSwitch® - RSW1022S** - Coaxial switch card (2x SPDT SMA)
- **RadiMation® Pro Software** - Full package EMC test software
- **Complete set of test accessories** - 10m RF coax cable, Radifield transport case and ISO17025 calibration for RadiSense® 10 probe, 10m fibre optic extension cable



Specifications are subject to change without notice

RadiCentre® CTR1009B#020

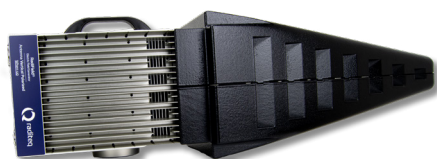
Performance



| | |
|-----------------------------------|--------------------------------------|
| Number of slots for Plug-in Cards | 7 |
| Display (TFT touch screen) | 7" TFT / WVGA (800x480) |
| Backplane | Intelligent versatile backplane |
| Dimensions | 19" wide - 3U, 132mm (h) x 312mm (d) |
| Weight | 7 kg |
| Operating System | Linux |
| Interfaces | USB, LAN, GPIB-488 |

RadiField® RFS2006B

Performance



| | |
|----------------------------------------|-------------------------|
| Frequency range | 0.8 GHz - 6 GHz |
| Three Meter Equivalent (TME) Field(1) | 10 V/m |
| Input connector | N-type |
| Max. input power to reach TME Field(1) | 0 dBm |
| Weight | 11 kg |
| Number of internal power meters | 2 (forward + reflected) |
| Directional coupler | integrated |

1) Three Meter Equivalent (TME) Field: 1.5 m x 1.5m Homogeneous field @ 3 m and 2 dB field compression according to IEC 61000-4-3

RadiGen RGN2006B

Performance



| | |
|----------------------------|-----------------------------------|
| Frequency range | 4 kHz - 6 GHz |
| Output level range | -70 dBm to +13 dBm |
| Output level settling time | < 1 msec |
| Output connector | sma |
| Modulation types | CW, AM, FM, Pulse and Gated Pulse |
| Frequency error | ±1 ppm/year |
| Frequency resolution | 1 Hz |

RadiSense® RSS2010S

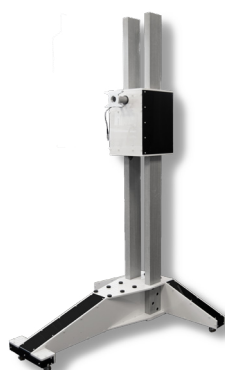
Performance



| | |
|-----------------------------|----------------------|
| Frequency range | 20 MHz - 10 GHz |
| Measuring range | 0.1 V/m to 750 V/m |
| Maximum input level | 1500 V/m |
| Frequency response | ± 1 dB |
| Linearity | ± 0.5 dB +/- 0.5 V/m |
| Isotropic deviation | < ± 0.25 dB @ 1 GHz |
| Electrical measuring volume | 117 cm ³ |

RadiTower RTW3000A

Performance



| | |
|----------------------|-------------------------------|
| Mast height | 2 meter |
| Type | Non reflective |
| Height adjustment | manual |
| Antenna polarisation | Automatic H/V |
| H/V control | Through RadiField supply card |



Raditeq B.V. | Vijzelmolenlaan 3 | 3447GX Woerden | The Netherlands

www.raditeq.com | T:+31 348 200 100